



TONGA POWER LIMITED

**TONGA RENEWABLE ENERGY ROADMAP**

**STATUS**

PESALILI TOHI  
Tonga Power Limited

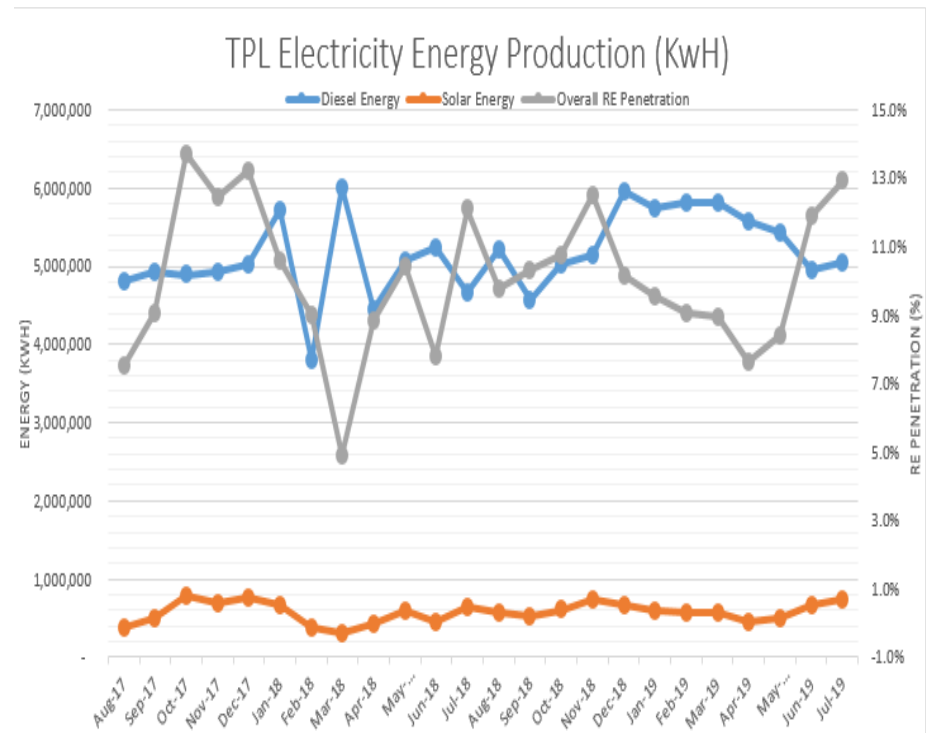


# OVERVIEW

- Tonga's Renewable Energy Penetration
- Where we want to be
- How do we get there
- Renewable Energy Road Map
- Hybrid System Plan to reach 50% by 2020

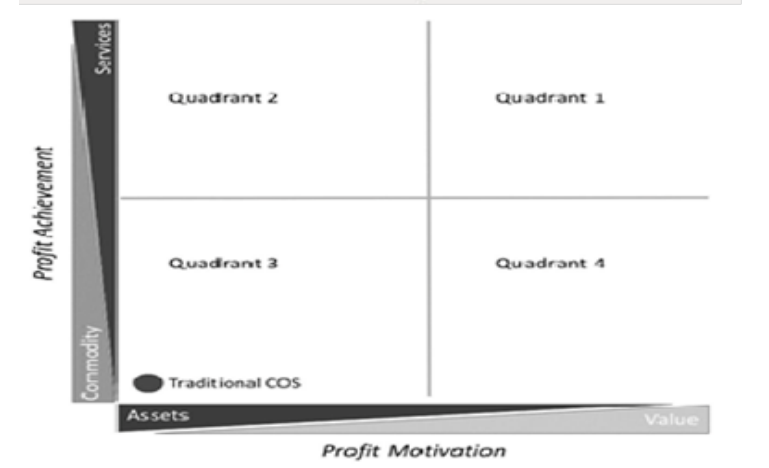
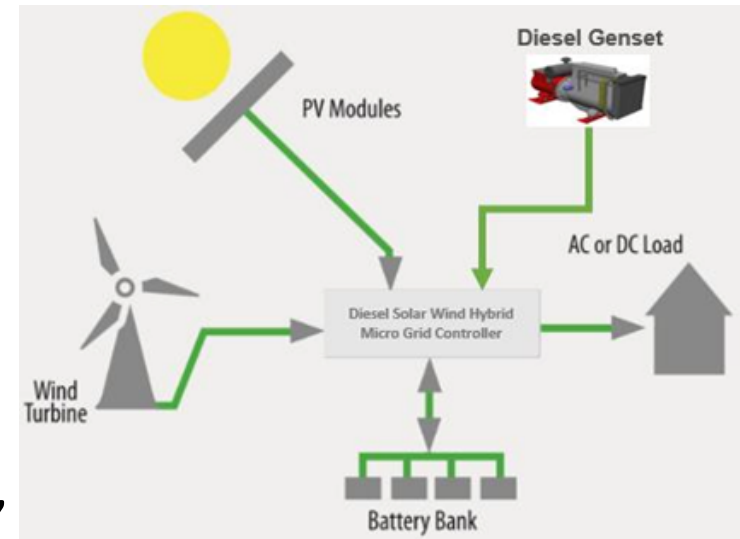
# Tonga's Renewable Energy Penetration

- Over 13% now
- Best month achieved is 14% - 16%
- Diesel Generation RE absorption limit reached (4.3MW)
- 17.7 MW of Diesel Capacity Installed
- 7.5 MW of RE Installed On-grid (Solar PV, Wind, IPP)
- 1.8 MW/1.6 MWh Total BESS Installed

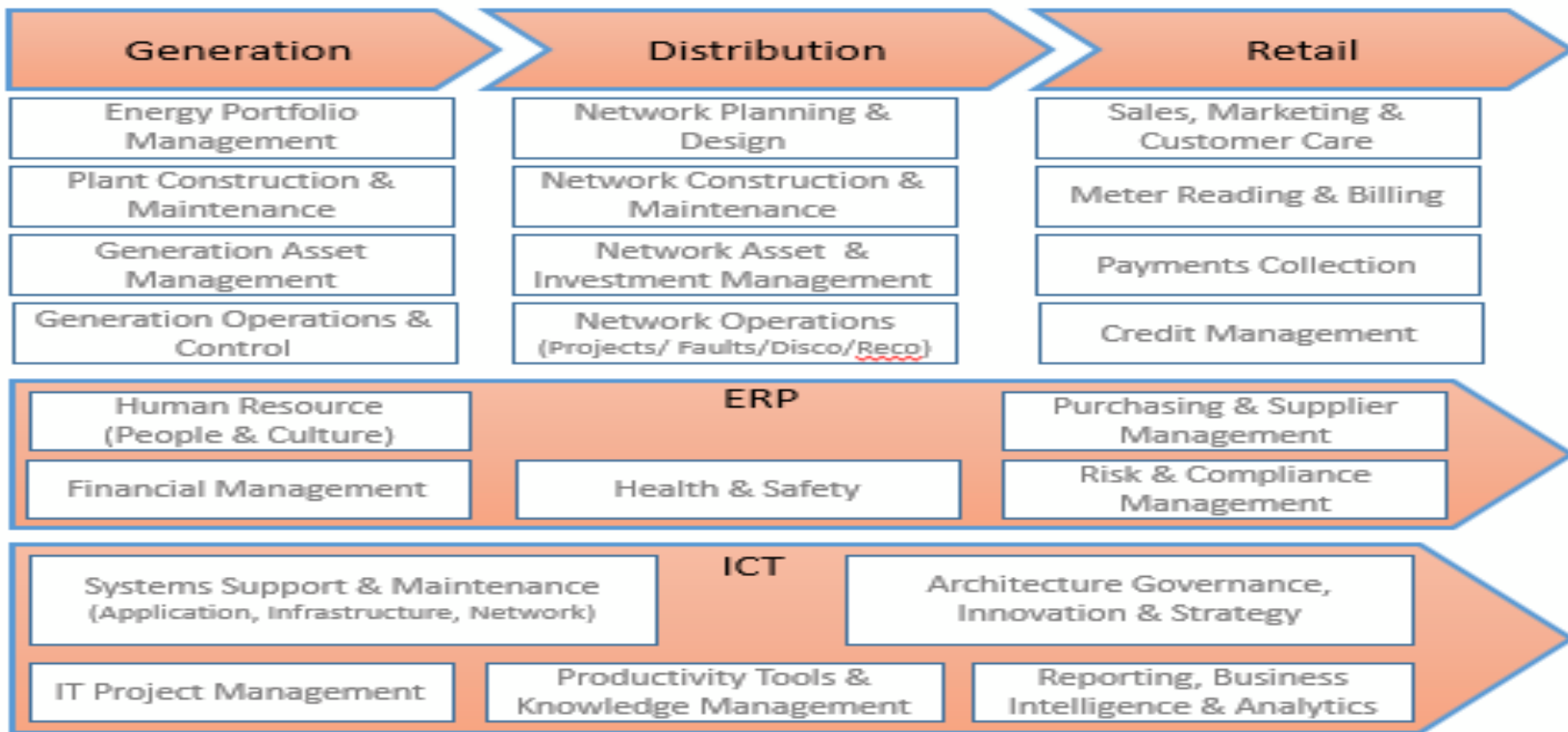


# Where We want to be?

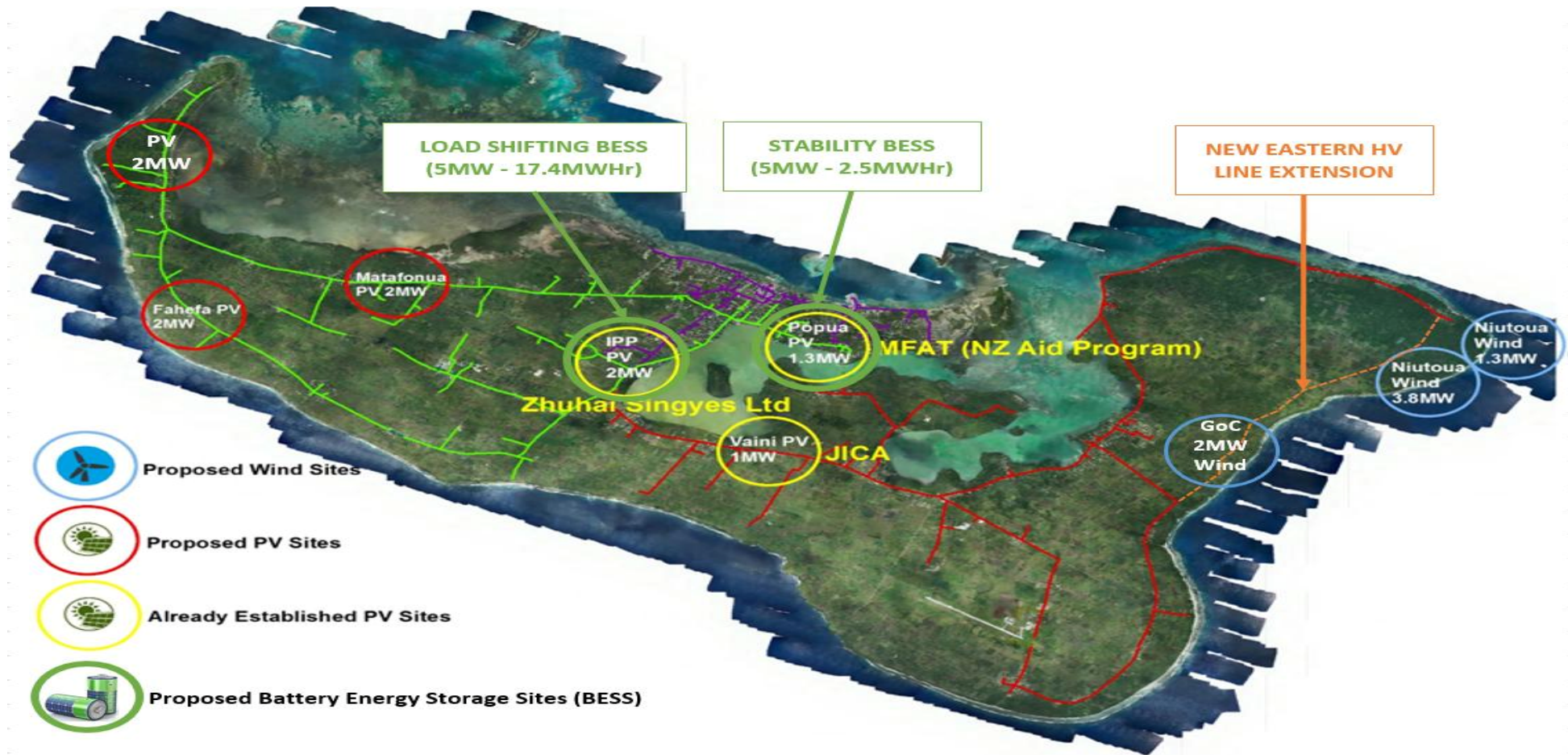
- **Specifically** – 17.5 MW of RE and 10 MW/20 MWh Energy storage added to the Tongatapu system
- **Measure** – 50% or more of electricity generation from RE
- **Achievable** – Through significant donor, private sector investment and a dedicated implementation team
- **Relative** – Socio-economic benefits through tariff stability due to less impact of oil price shock
- **Time Bound** – before the end of 2020



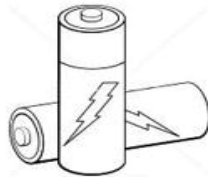
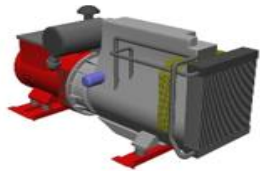
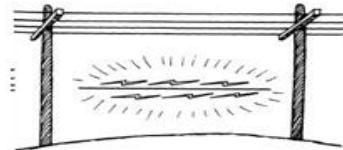
# How do we get there?



# Renewable Energy Road Map



► Hybrid System Plan to reach 50% Renewable Penetration by 2020



**SAFE,  
RELIABLE,  
SUSTAINABLE,  
AFFORDABLE  
Electricity for  
the people of  
Tonga**



# MALO AUPITO....Any Question??



Pesalili Tohi  
Tonga Power Limited  
m (+676) 772-0088  
e [ptohi@tongapower.to](mailto:ptohi@tongapower.to)  
w [www.tongapower.to](http://www.tongapower.to)

**TC GITA POWER RESTORATION - TONGATAPU & EUA**